



Hangzhou Tianlong Biotechnology Co., Ltd.

Add: Room 1906, Fengqi Times Tower, No.338, Fengqi East Road, Hangzhou, Zhejiang, China.

MATERIAL SAFETY DATA SHEET

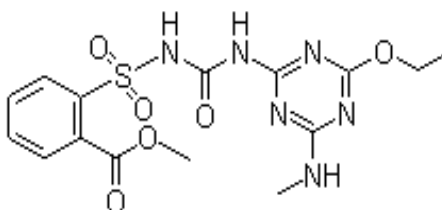
1. Chemical Product and company Identification

Product Name: Ethametsulfuron-methyl

Molecular Formula: C₁₅H₁₈ N₆O₆S

Molecular Weight: 410.4

Structural Formula:



Chemical Name: methyl 2-[(4-ethoxy-6-methylamino-1,3,5-triazin-2-yl) carbamoylsulfamoyl]benzoate

CAS No.: 97780-06-8

Supplier: HANZHOU TIANLONG BIOTECHNOLOGY CO., LTD

Address: Room 1906, Fengqi Times Tower, No.338 Fengqi East Road, Hangzhou, China, 310020

Tel: 0086-571-87214516

Fax: 0086-571-87079476

2. Composition / Information on Ingredients

Composition	CAS No.	Content %
Ethametsulfuron-methyl	97780-06-8	95.0
Other ingredients		5.0

3. Hazards Identification

Harmful if absorbed through skin. Avoid contact with eyes, skin or clothing. Prolonged or frequently repeated skin contact may cause an allergic reaction in some individuals.

4. First Aid Measures

Skin Contact: If on skin or clothing: Take off contaminated clothing. Rinse skin with plenty of water for 15-20 minutes. Get medical attention if irritations persist by calling a poison center or doctor for treatment advice.

Eye contact: In case of contact, immediately flush eyes with plenty of water for 15-20 minutes. Call a physician if irritation persists.

Ingestion: No specific intervention is indicated as compound is not likely to be hazardous by ingestion. Consult a physician if necessary. Have the product container or label with you when calling a poison center or doctor, or going for treatment.

Inhalation: No specific intervention is indicated as the compound is not likely to be hazardous by inhalation. Consult a physician if necessary.

5. Fire-Fighting Measures

Extinguishing Media: Water Spray, Dry Chemical, CO₂.

Fire Fighting Instructions: Wear self-contained breathing apparatus. Wear full protective equipment. Runoff from fire control may be a pollution hazard. If area is exposed to fire and conditions permit, let fire burn itself out. Burning chemicals may produce by-products more toxic than the original material. If product is on fire, wear self-contained breathing apparatus and full protective equipment.

Use water spray. Control runoff.

6. Accidental Release Measures

Use appropriate personal protective equipment during clean-up.

Emergency Response: Chemical resistant coveralls, waterproof gloves, waterproof boots and face/eye protection. If dusting occurs, use approved respirator protection. Follow applicable the Local laws/regulations. Prevent material from entering sewers, waterways, or low areas.

7. Handling And Storage

Handling: Avoid breathing mist. Avoid breathing dust. Avoid contact with eyes, skin, or clothing. Wash thoroughly after handling. Wash clothing after use.

Storage: Store product in original container only. Do not store or consume food, drink or tobacco in areas where they may become contaminated with this material.

8. Exposure Controls/Personal Protection

Engineering Controls: Use only with adequate ventilation.

Personal Protective Equipment: Wear impervious protective clothing, including boots, gloves, lab coat, apron or coveralls, as appropriate, to prevent skin contact. Use chemical safety goggles and/or a full face shield where splashing is possible. Maintain eye wash fountain and quick-drench facilities in work area.

9. Physical and Chemical Properties

Appearance: Light tan solid

Melting point : 194°C

Vapor pressure: 7.7×10^{-10} mPa

Solubility: 50mg/l in water, 1.6g/l in acetone
Partition Coefficient: 38.4

10. Stability and Reactivity

Chemical Stability: Stable at normal temperatures and storage conditions.
Incompatibility with Other Materials: None reasonably foreseeable.
Polymerization: Polymerization will not occur.

11. Toxicological Information

Acute Oral LD50 (Rat): >5,000 mg/kg for rats
Acute Dermal LD50: >2,000 mg/kg for Rabbits
Low toxicity by ingestion.
Moderate to low toxicity by skin contact.
Eye Irritation: Not an eye irritant.

12. Ecological Information

Aquatic Toxicity 96 hour LC50, Rainbow Trout > 600 mg/L.
Mallard (5d)LC50 :5620mg/kg
Bee acute LD50: >12.5µg/bee
Earthworm LD50(14d) : >1000mg/kg soil .

13. Disposal Considerations

Waste Disposal: Do not contaminate water supply, food or feed by storage or disposal. Treatment, storage, transportation, and disposal must be in accordance with applicable local regulations. Do not flush to surface water or sanitary sewer system. Wastes resulting from the use of this product may be disposed of on site or at an approved waste disposal facility.
Container Disposal: Triple rinse (or equivalent) the container. Then offer for recycling or reconditioning, or puncture and dispose of in a sanitary landfill, or by incineration, or if allowed by state and local authorities, by burning. If burned, stay out of smoke.

14. Transport Information

Not applicable

15. Regulatory Information

Not applicable

16. Other Information

All information and instructions provided in this Material Safety Data Sheet (MSDS) are based on the current state of scientific and technical knowledge at the date indicated on the present MSDS and are presented in good faith and believed to be correct. This information applies to the product as such. In case of new formulations or mixes, it is necessary to ascertain that a new

danger will not appear. It is the responsibility of persons on receipt of this MSDS to ensure that the information contained herein is properly read and understood by all people who may use, handle, dispose or in any way come in contact with the product. If the recipient subsequently produce formulations containing this product, it is the recipients sole responsibility to ensure the transfer of all relevant information from this MSDS to their own MSDS.