



Hangzhou Tianlong Biotechnology Co., Ltd.

Add: Room 1906, Fengqi Times Tower, No.338, Fengqi East Road, Hangzhou, Zhejiang, China.

MATERIAL SAFETY DATA SHEET

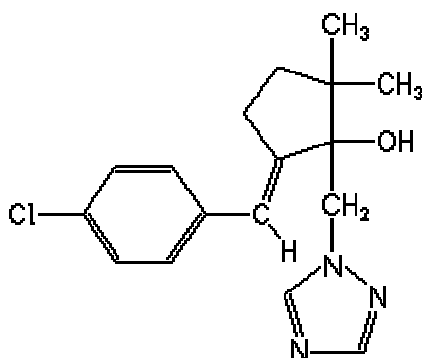
1. Chemical Product and company Identification

Product Name: Triticonazole

Molecular Formula: C₁₇H₂₀ClN₃O

Molecular Weight: 317.81

Molecular Structure:



Chemical Name: (5E)-5-[(4-chlorophenyl)methylene]-2,2-dimethyl-1-(1H-1,2,4-triazol-1-ylmethyl)cyclopentanol

CAS No.: 131983-72-7

Supplier: HANZHOU TIANLONG BIOTECHNOLOGY CO., LTD

Address: Room 1906, Fengqi Times Tower, No.338 Fengqi East Road, Hangzhou, China, 310020

Tel: 0086-571-87214516

Fax: 0086-571-87079476

2. Composition / Information on Ingredients

Composition	CAS No.	Content %
Triticonazole	131983-72-7	95.0
Other ingredients		5.0

3. Hazards Summarizing

Swallowed: Low oral toxicity

Eye: Will irritate the eyes

Skin: Low inhalation toxicity

Other health effects: No other health effects known

4. First Aid Measures

Eye Contact: If this product comes in contact with the eyes: Wash out immediately with fresh running water. Ensure complete irrigation of the eye by keeping eyelids apart and away from eye and moving the eyelids by occasionally lifting the upper and lower lids.

Skin Contact: If skin contact occurs: Immediately remove all contaminated clothing, including footwear. Flush skin and hair with running water (and

soap if available).

Inhalation: If fumes or combustion products are inhaled remove from contaminated area. Lay patient down. Keep warm and rested.

Ingestion: If swallowed, refer for medical attention, where possible, without delay. Where medical attention is not immediately available or where the patient is more than 15 minutes from a hospital or unless instructed otherwise.

5. Fire-Fighting Measures

Extinguishing Media: Dry chemical powder, foam, carbon dioxide, water

Special fire fighting procedures: Full protective gear, including self-contained breathing apparatus, must be worn.

6. Accidental Release Measures

Avoid contact with eyes, skin and clothing or inhalation of product.

Dealing with spills and disposals may result in the potential for increased personal exposure. During such operations it is recommended that the following protective clothing is worn:

- * Cotton overalls buttoned to the neck and wrist
- * Elbow-length PVC gloves
- * Face-shield or goggles
- * Impervious footwear

CONTAIN SPILL and absorb with earth, sand, sawdust, clay, sweeping material or absorbent material and store in properly labelled, sealed drums for safe disposal in an approved landfill, or bury under at least 500 mm of soil in a non-crop, non-pasture area away from water sources or homes. DO NOT burn empty containers or product. Deal with all spillages immediately. Keep people away and upwind. If contamination of drains, streams, watercourses, etc. is unavoidable, warn the local water authority.

7. Handling and Storage

Keep out of reach of children. Wear long sleeved overalls and gloves while handling. After handling and before eating, drinking or smoking, wash hands, arms and face thoroughly with soap and water. Store in the closed, original container in a dry, cool, well-ventilated area. DO NOT store for prolonged periods in direct sunlight. Avoid contact with eyes, skin and clothing, and avoid inhalation of product or dust from treated seed. Must be stored and transported according to local, State/Territory and Federal regulations.

8. Exposure Controls/Personal Protection

Engineering controls: Use in a well-ventilated area only.

Personal Protective Equipment:

To avoid eye and skin contact, wearing the following personal protective clothing and equipment is recommended:

Eyes: Safety goggles or face shield

Clothing: Cotton overalls buttoned to the neck and wrist and a washable hat.

Gloves: Elbow length PVC gloves.

Respiratory: Respiratory protection is not normally required. If airborne concentrations are likely to exceed the exposure standard above, an AS/NZS 1715/1716 approved respirator should be worn.

Other: After use and before eating, drinking or smoking, wash hands, arms and face thoroughly with soap and water. After each day's use wash gloves, goggles or face shield and contaminated clothing.

9. Physical and Chemical Properties

Appearance: white powder

Melting Point: 139-140.5°C.

Density: 1.326-1.369

Vapour Pressure: $< 1.0 \times 10^{-5}$ mPa(50°C).

Solubility: Soluble in water 7mg/L

10. Stability and Reactivity

Stability: Stable under normal conditions of use

Reactivity data: No dangerous reaction known under normal conditions of use.

Conditions contributing to instability: Extreme heat and fire.

Incompatibility: Compatible with most other chemical compounds.

Hazardous decomposition products: Toxic thermal decomposition products may include oxides of carbon, nitrogen and compounds of chlorine.

11. Toxicological Information

Acute toxicity:

Oral (rat) LD₅₀: >2000mg/kg

Inhalation (rat) LC₅₀: >1.4mg/L/4h

Dermal (rat) LD₅₀: >2000mg/kg

12. Ecological Information

Bird toxicity

LD50: >200 mg/kg for Bobwhite quail (*Colinus virginianus*), Red-legged partridge (*Alectoris rufa*), Grey partridge (*Perdix perdix*), Domestic pigeon (*Columba livia*), Ring-necked pheasant (*Phasianus colchicus*).

Fish toxicity

LC50: >10 mg/L (96 h); Rainbow trout (*Oncorhynchus mykiss*) and Bluegill sunfish (*Lepomis macrochirus*).

Daphnia toxicity

LC50: >10 mg/L (96 h) *Daphnia magna*.

13. Disposal Considerations

Triple or, preferably, pressure rinse containers before disposal. Add rinsings to the spray tank. Do not dispose of undiluted chemicals on-site. Break, crush or puncture and bury empty containers in local authority landfill. If no landfill is available, bury the containers below 500 mm in a disposal pit specifically marked and set up for this purpose clear of waterways, desirable vegetation and tree roots.

Empty containers or product should not be burnt.

14. Transport Information

Not classified as a dangerous good according to the Australian Code for the Transport of Dangerous Goods by Road and Rail.

15. Regulatory Information

Safety Phrases: Keep out of reach of children

Keep away from food, drink and animal feeding stuff

Do not breathe spray

When using do not eat, drink or smoke

In case of contact with eyes, rinse immediately with plenty of water and seek medical advice

In case of accident or if you feel unwell, seek medical advice immediately (Show the label where possible)

Use appropriate containment to avoid environmental contamination

16. Other Information

All information and instructions provided in this Material Safety Data Sheet (MSDS) are based on the current state of scientific and technical knowledge at the date indicated on the present MSDS and are presented in good faith and believed to be correct. This information applies to the product as such. In case of new formulations or mixes, it is necessary to ascertain that a new danger will not appear. It is the responsibility of persons on receipt of this MSDS to ensure that the information contained herein is properly read and understood by all people who may use, handle, dispose or in any way come in contact with the product. If the recipient subsequently produce formulations containing this product, it is the recipients sole responsibility to ensure the transfer of all relevant information from this MSDS to their own MSDS.